



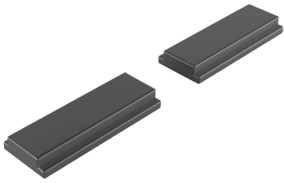
HOFFMAN

COMPACT LED LIGHT MOUNTING MAGNET FIXATION, CELA, 30X12X4MM, BLACK, MAGNET

CATALOG NUMBER

CELA02MF

Magnet fixation for CEL.



FEATURES

Pack quantity: 2 pcs.

Design: Rectangular magnets slide into the magnet holder on the compact LED light.

Description: Optional magnetic accessory kit for compact LED light.

PRODUCT ATTRIBUTES

Height: 1.18 in

Width: 0.47 in

Depth: 0.16 in

Material: Magnet

Finish: Smooth Matte

Color: Black

Weight: 0.19 lb

WARNING

nVent products shall be installed and used only as indicated in nVent's product instruction sheets and training materials. Instruction sheets are available at www.nvent.com and from your nVent customer service representative. Improper installation, misuse, misapplication or other failure to completely follow nVent's instructions and warnings may cause product malfunction, property damage, serious bodily injury and death and/or void your warranty.

2100 Hoffman Way
Anoka, MN 55303-1745 | USA
763.421.2240



Our powerful portfolio of brands:
nVent.com CADDY ERICO HOFFMAN RAYCHEM SCHROFF
TRACER